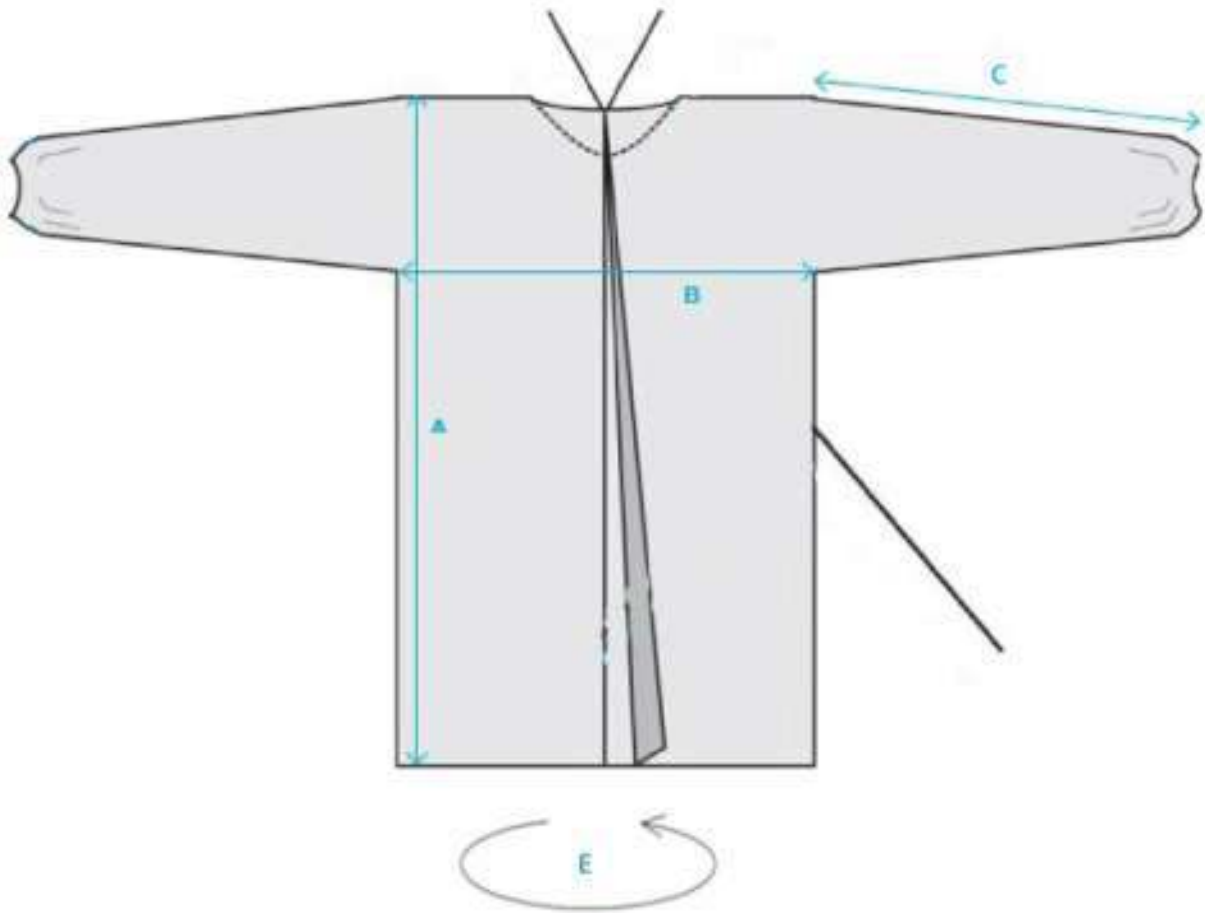


DISPOSABLE ISOLATION GOWN TECHNICAL DATA SHEET



CHARACTERISTIC	SPECIFICATION
Material Composition	SMS Nonwoven Material
Description	STERILE Gown made of non-woven fabric with full back closure. Features: String belt, tie-on neck closure, wristband,
Basic Weight (g/m ²)	25 g/m ² (±2)
Colour	Blue /White

MEASUREMENT DIAGRAM



PART OF GOWN		DIMENSION (cm) Tolerance ± 3
A	Gown Length	118
B	Underarm Width	75
C	Sleeve Length	55
E	Open Gown Width	150